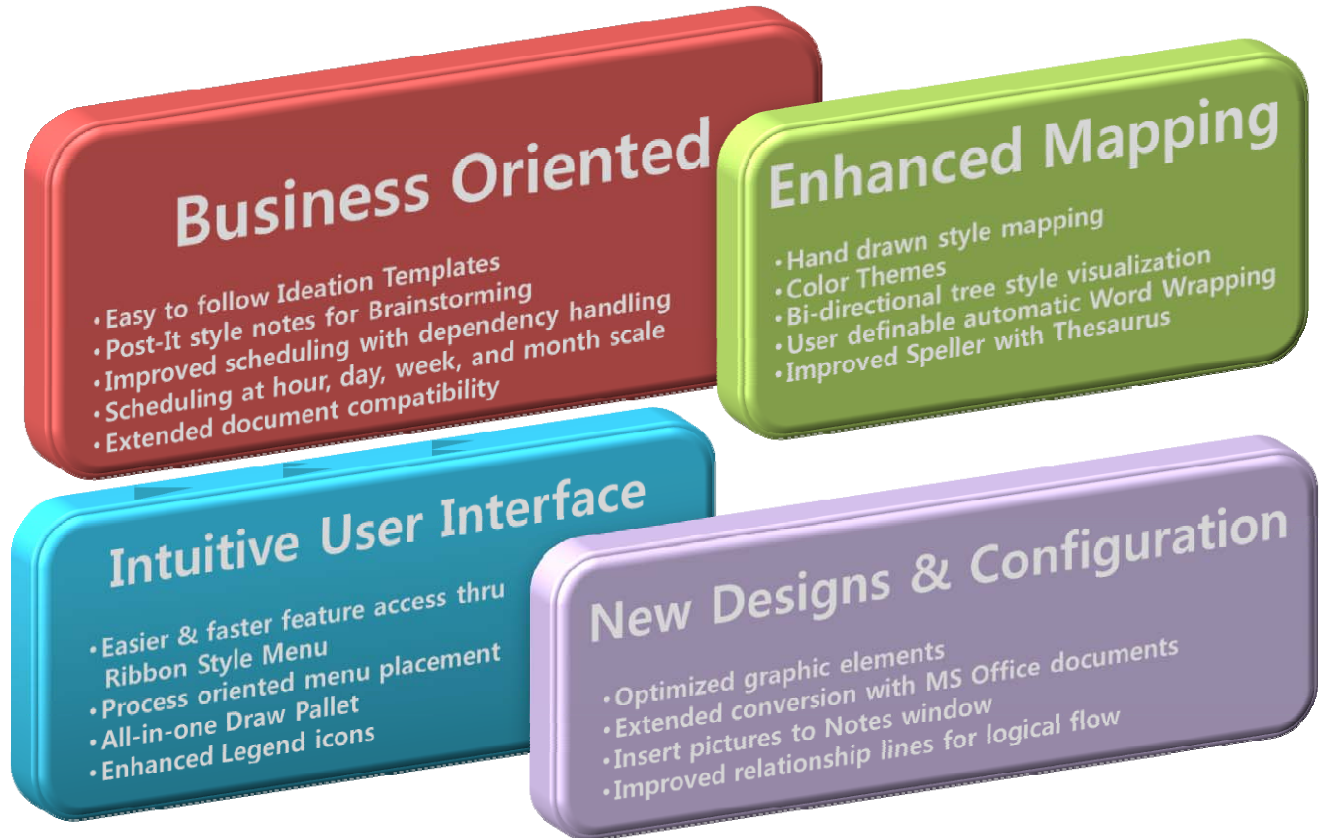


# MindMapper 2009 What's New

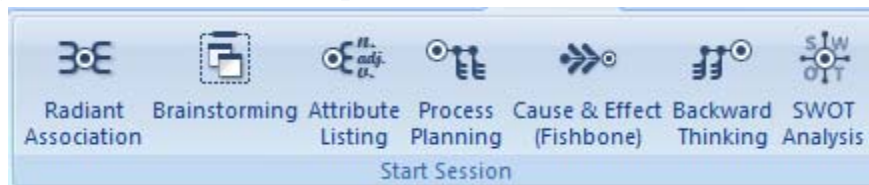
---

## I. Overview



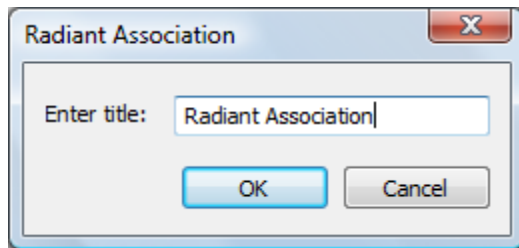
## II. Business Oriented Features

### A. Easy to use Ideation Templates

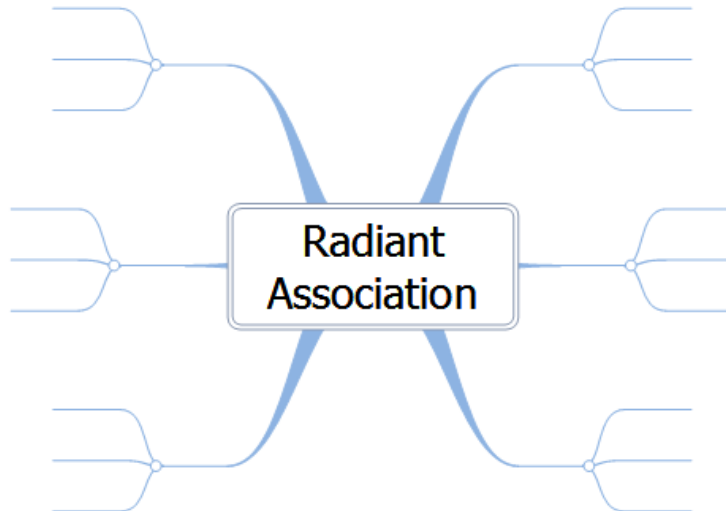


#### 1. Radiant Association

Select Menu -> Enter Title

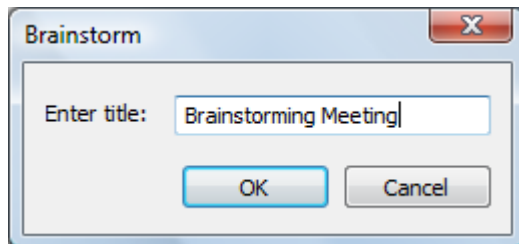


Top level topics with 3 sub topics each are generated automatically



## 2. Brainstorming

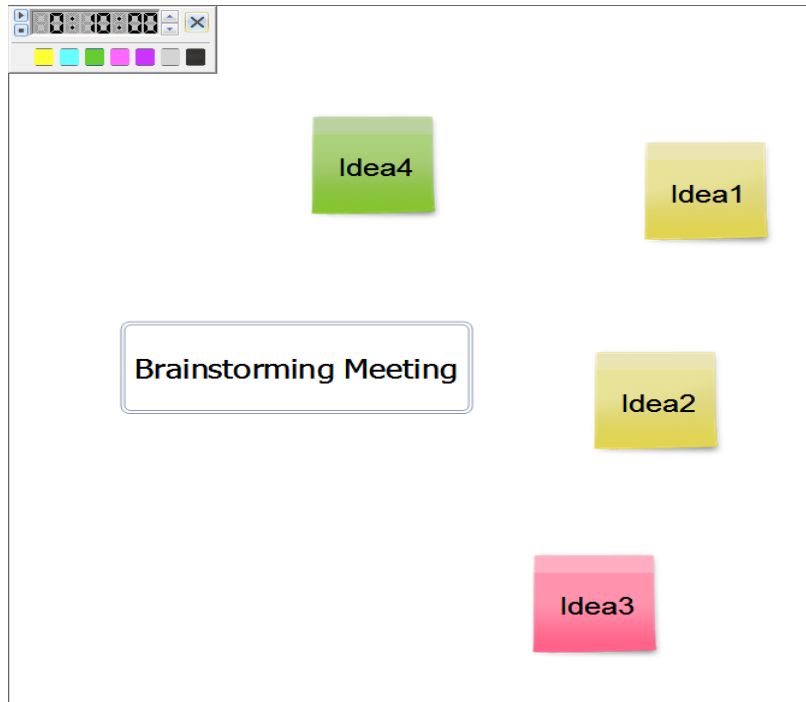
This menu let's you easily start and execute a Brainstorming session



Select Menu -> Enter Title -> Automatically change to Full Screen Mode

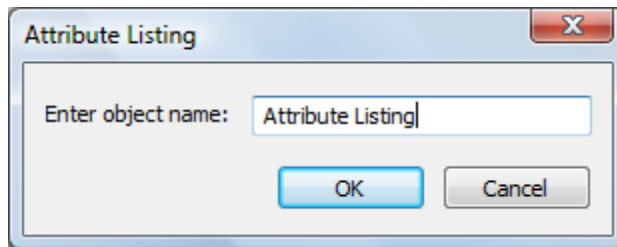
==> Default mapping direction is Rightward.

Ideas can be written using Post-It style notes with various colors.

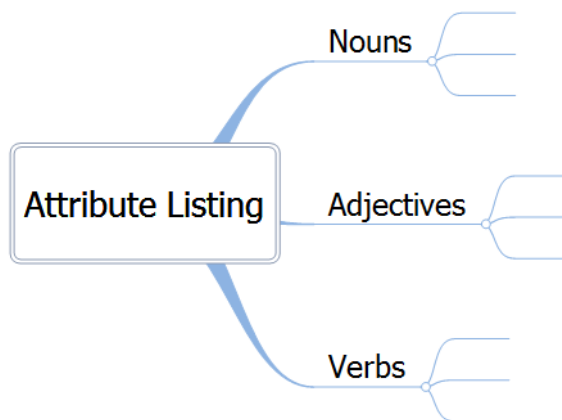


### 3. Attribute Listing

Select Menu -> Enter Title

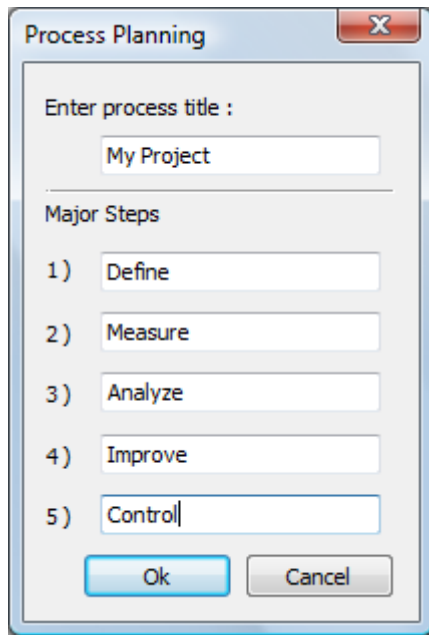


==> Rightward tree contains 3 topics with Nouns, Adjectives, and Verbs. Each also contain 3 sub topics.

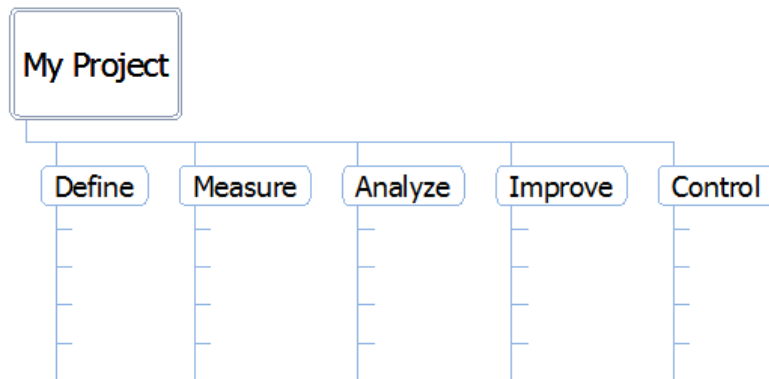


### 4. Process Planning

Select Menu -> Enter Title and first level Topics

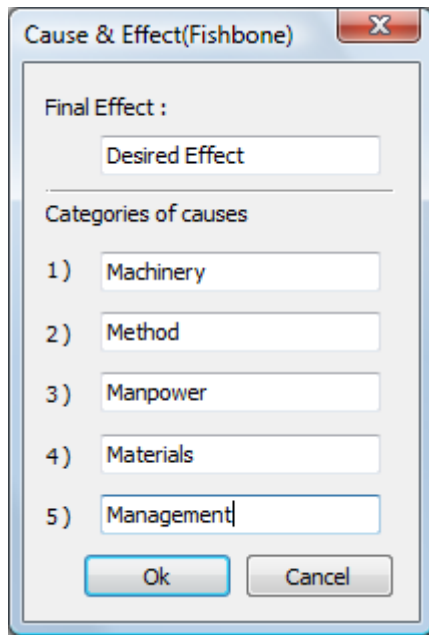


==> Each Main Topic is listed with 5 sub topics



## 5. Cause & Effect (Fishbone)

Select Menu -> Enter Effect and main factors



Cause & Effect(Fishbone)

Final Effect :  
Desired Effect

Categories of causes

1) Machinery

2) Method

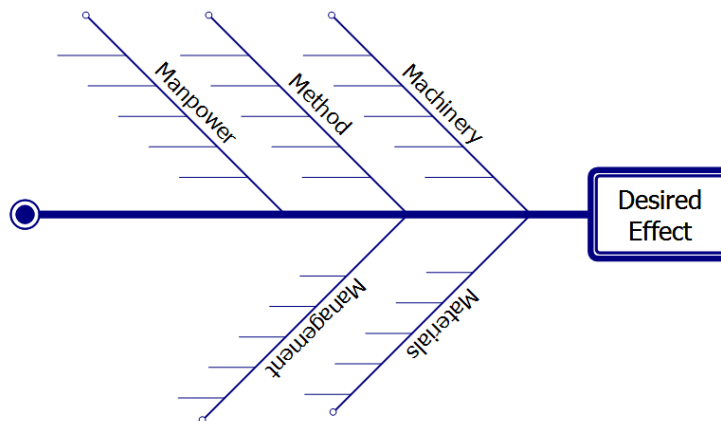
3) Manpower

4) Materials

5) Management

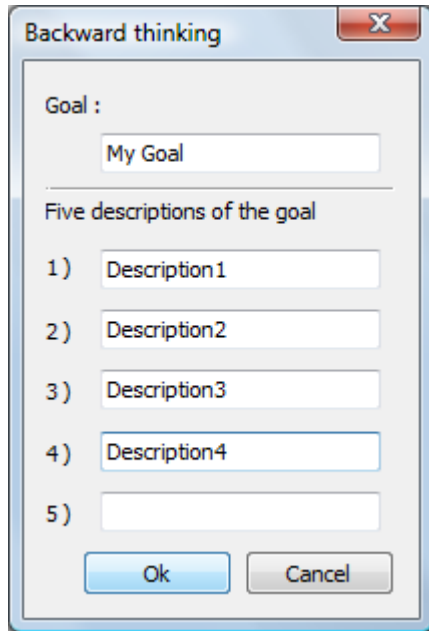
Ok Cancel

Rightward Fishbone map is produced with the Category of Causes as the first level topics.



## 6. Backward Thinking

Select Menu -> Enter Goal and Descriptions



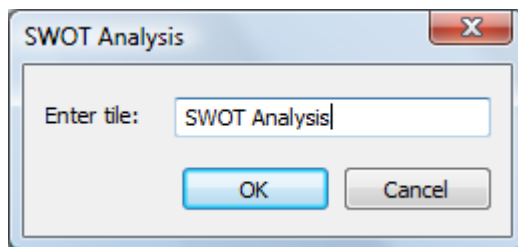
A dialog box titled "Backward thinking" with a close button (X) in the top right corner. It contains a "Goal :" label followed by a text input field containing "My Goal". Below this is a section labeled "Five descriptions of the goal" with five numbered list items (1) through (5), each followed by a text input field. The fields contain "Description1", "Description2", "Description3", "Description4", and an empty field. At the bottom are "Ok" and "Cancel" buttons.

==> Leftward Process Tree is create with the Descriptions as the top level topics



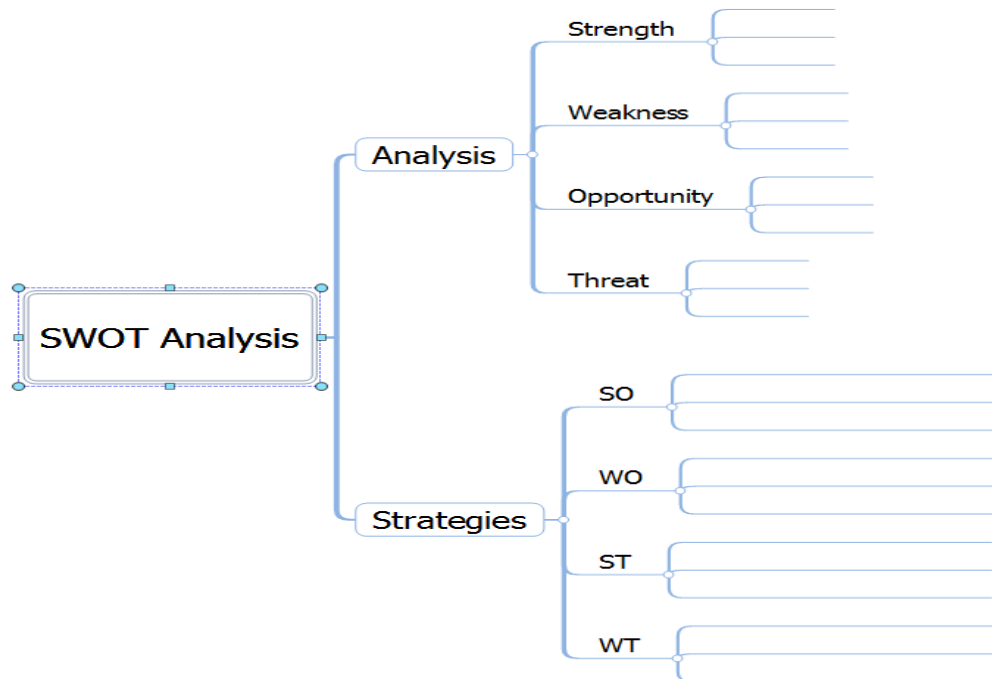
## 7. SWOT Analysis

Select Menu -> Enter Title



A dialog box titled "SWOT Analysis" with a close button (X) in the top right corner. It contains a label "Enter tile:" followed by a text input field containing "SWOT Analysis". At the bottom are "OK" and "Cancel" buttons.

Strengths, Weaknesses, Opportunities, and Threats are placed under Analysis  
Strength Opportunities, Weakness Opportunities, Strength Threats, and Weakness Threats are create under Strategies.



## B. Post-It style notes for Brainstorming

Ideation Tab -> Brainstorming

### 1. Support for Post-It style notes

Create Post-It Notes by pressing SHIFT + Left Mouse Button

Change Note colors by scrolling the Mouse Wheel, or by clicking the color under the Clock icon

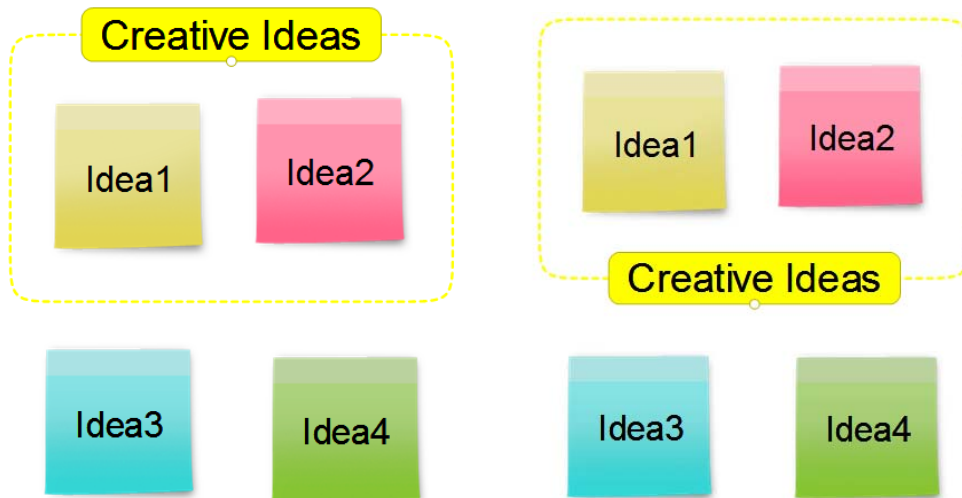


### 2. Grouping Notes together

Create notes, then select multiple notes by dragging the mouse.

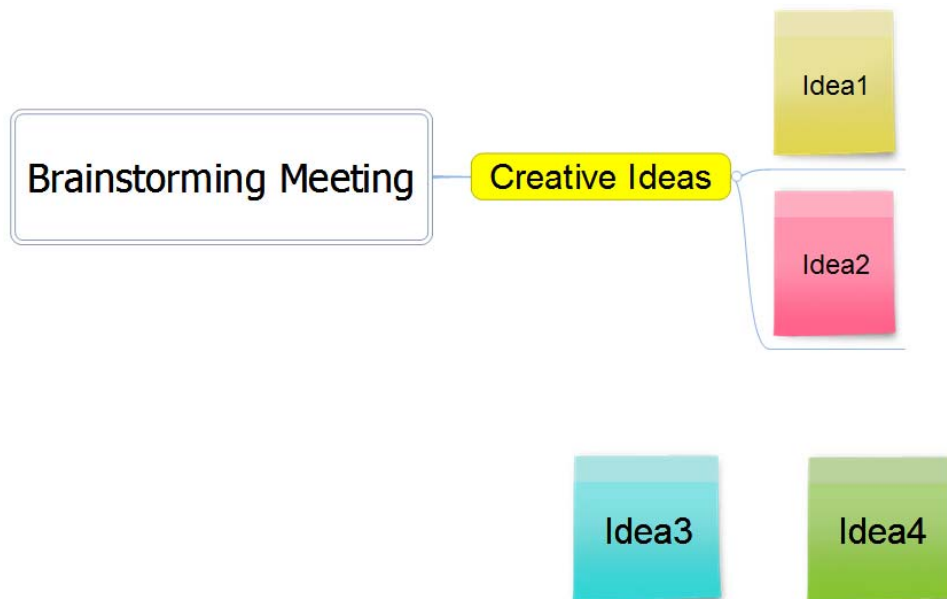
To Group notes together, press Shift + Left Mouse Button, then enter a Title for the Group.

Change the location of Group Title by pressing selecting the title then press the Arrow keys



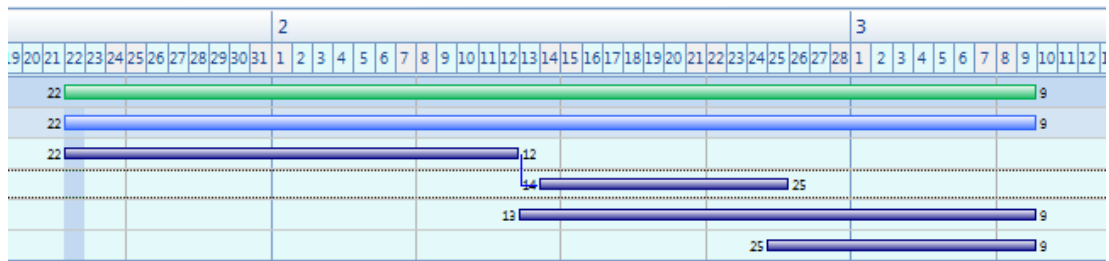
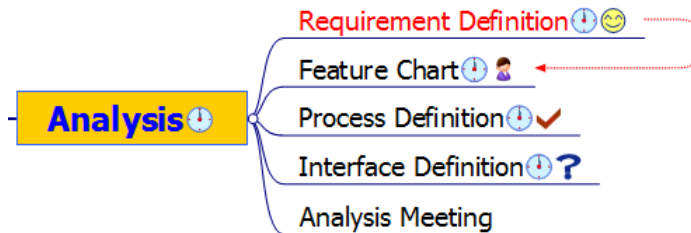
### 3. Add Group to the map

To attach a Note Group to a tree, simply drag the Group Title next to a tree until you see a black arrow appear, then drop the group.



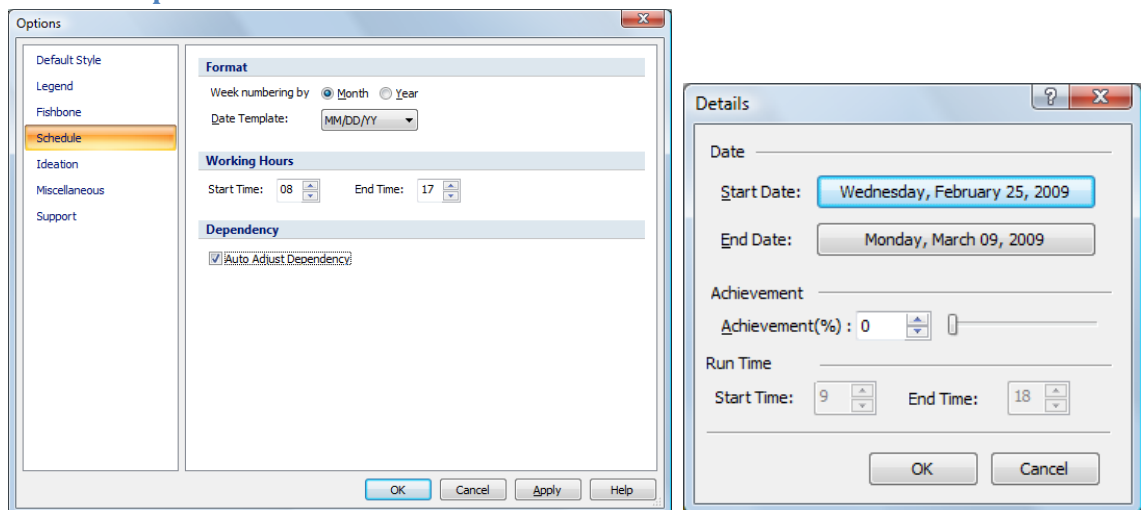
### C. Improved Scheduling with Dependency Handling

1. You can define scheduling dependency such that if task1 is delayed, all other dependent task schedules are pushed back automatically.
2. Applying Schedule Dependency
3. Map Example (Map and Schedule View)



### D. Detailed Project Scheduling in Hour Units

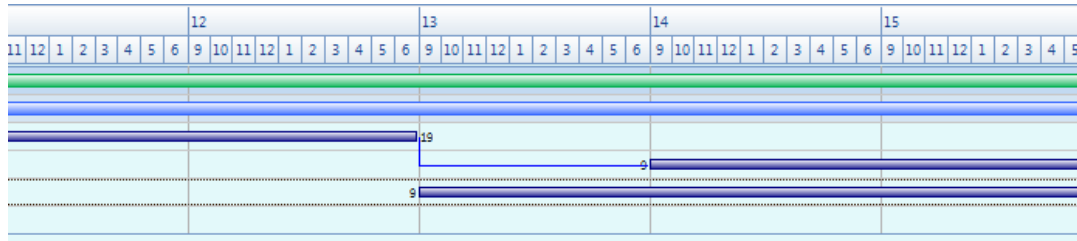
1. MindMapper 2008 supported scheduling to within Day units. Now you can schedule tasks and events down to each Hour.
2. Schedule Options Window



Option Dialog is used for setting default schedule settings. To set details for each schedule, right-click on the schedule bar.

### 3. Showing the Hour Units in Schedule Window

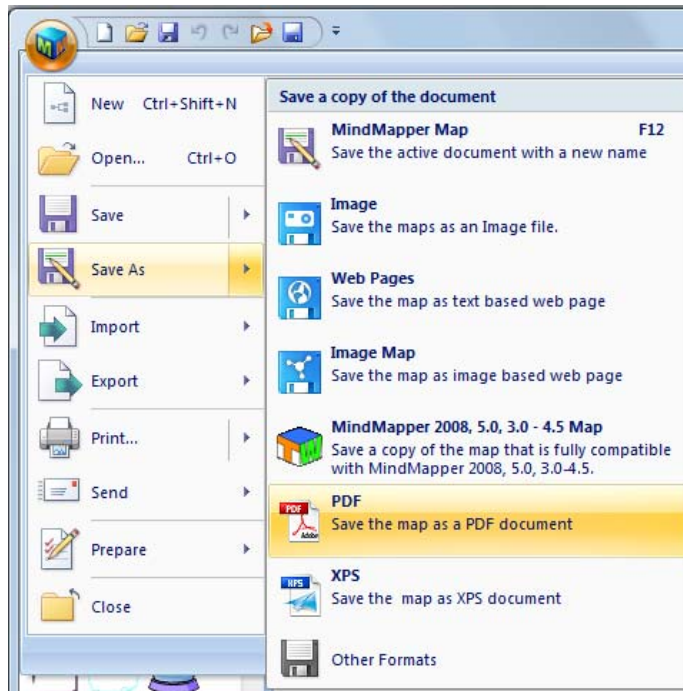
To show the Hour units, right click on the Schedule window and select Scale Down.  
The below diagram shows daily hours from 9am to 6pm.



## E. Enhanced Compatibility

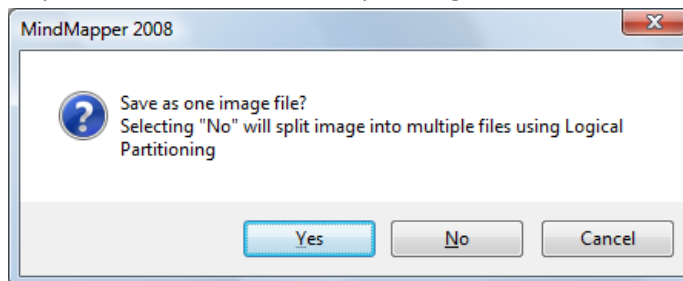
### 1. PDF Save Integration

MindMapper 2009 Professional now includes an option to Save as PDF document.



### 2. Save as JPG image using Logical Partitioning

Instead of saving your large map into a single JPG image file, you can now logically divide your map and save them into multiple image files.



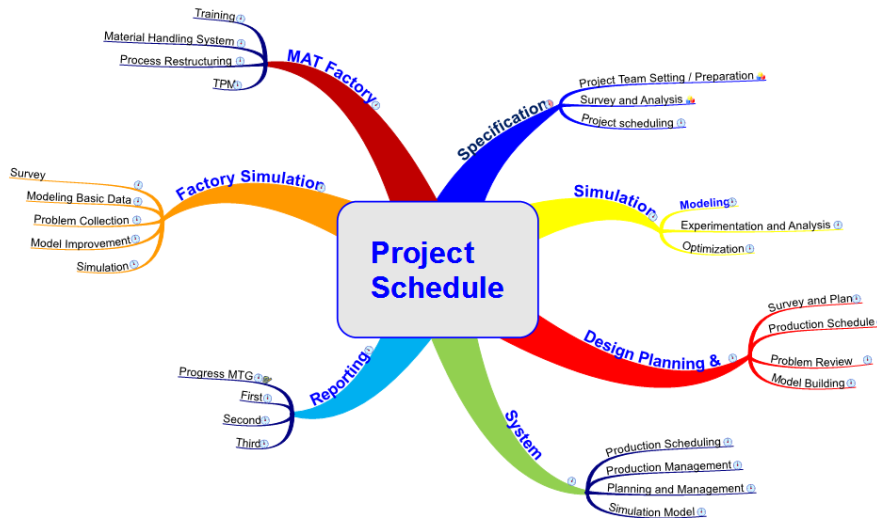
Selecting "Yes" will save file into one image file (as with previous versions of MindMapper).

Selecting "No" will split your map and save them into multiple images that are automatically numbered.

### III. Enhanced Mapping Experience

#### A. Hand Drawn Style Mapping for Artistic look

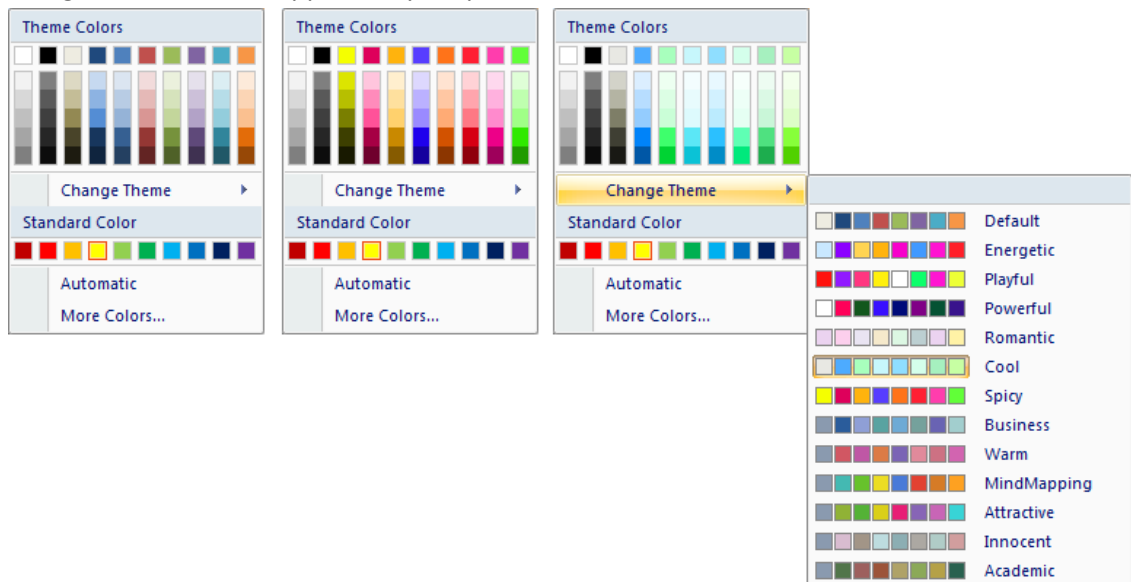
1. Create mindmaps that look like it was intended as drawn by hand



#### B. Color Themes

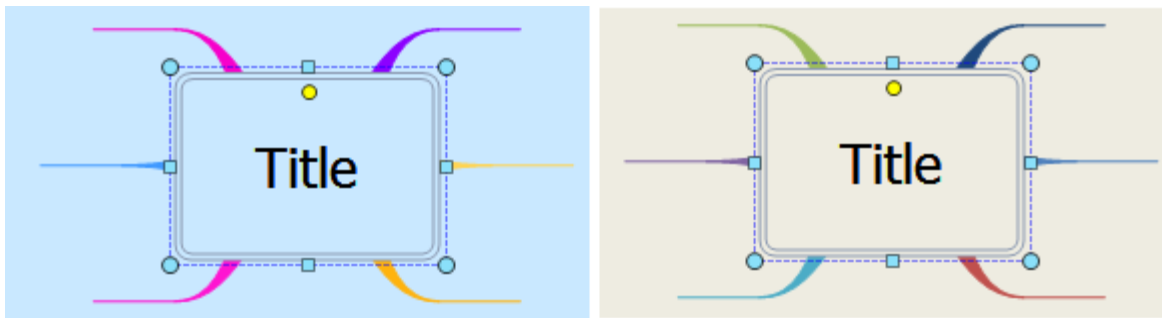
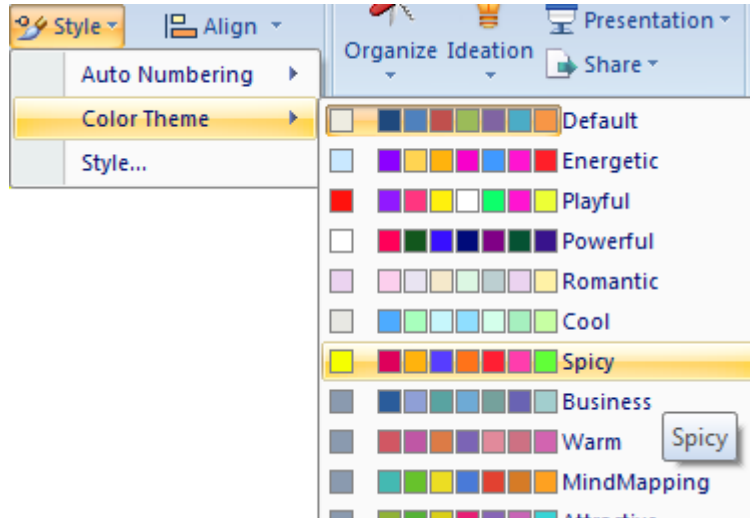
1. Color Theme Pallet

You can choose a color theme for your map (text, objects, branches, background, etc) and easily change the colors that appear on your pallet.



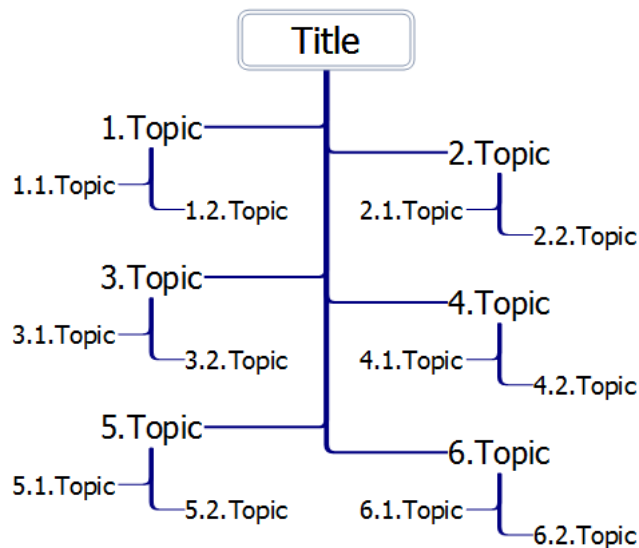
## 2. Applying Color Theme to your Map

In the Home menu, Format Tab, Style button, you can easily change the color theme for your entire map by choosing one of the themes listed.

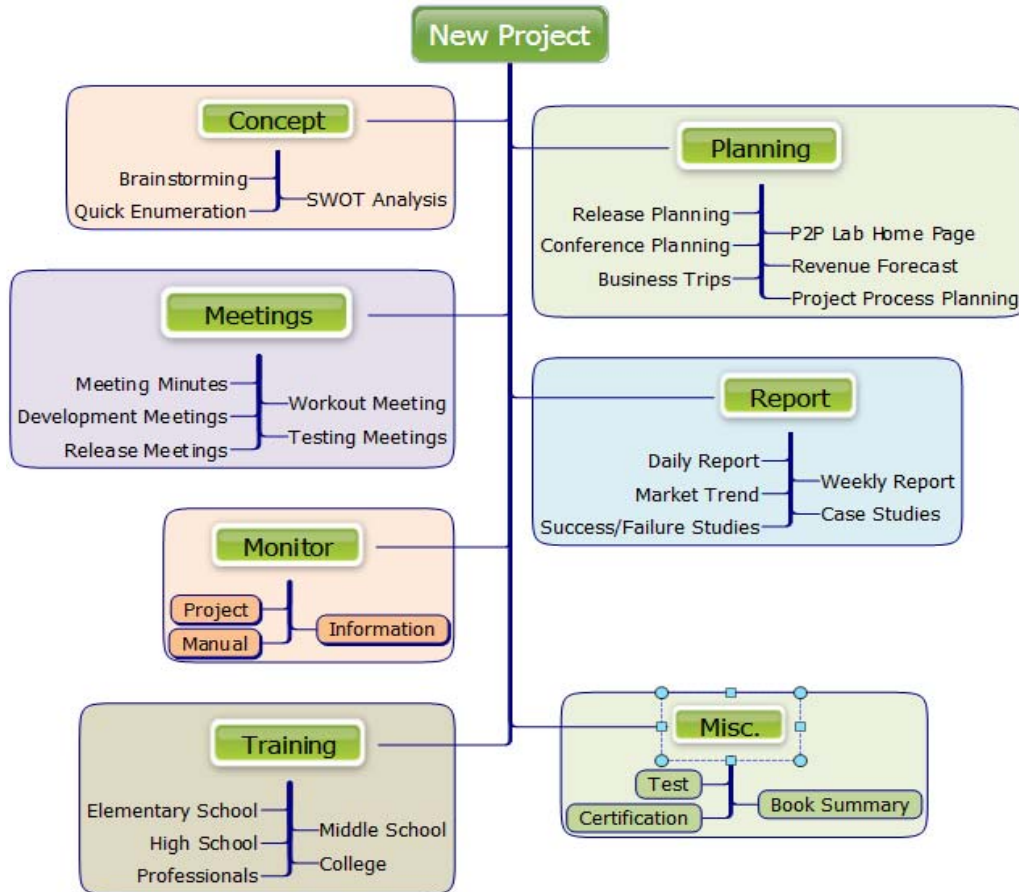


## C. Bi-Directional Tree Structure

1. New mapping direction, Bi-Directional Tree is introduced.



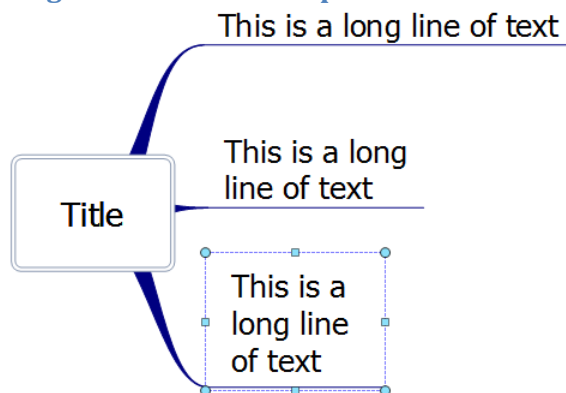
## 2. You create the following sample map



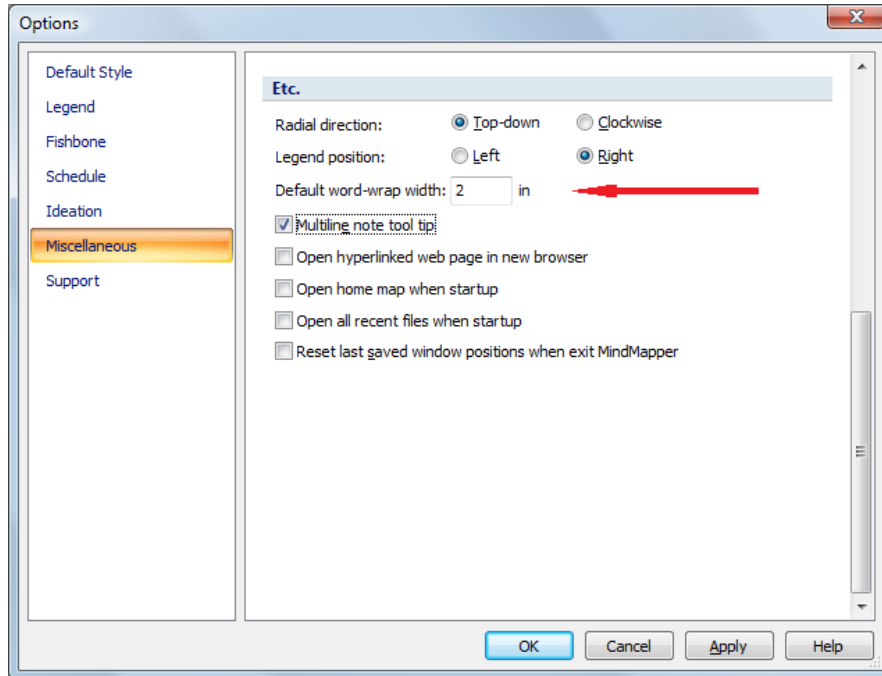
## D. Automatic Word Wrapping

MindMapper will easily line-wrap your long text. Traditionally, you had to type Ctrl-Enter to break a line manually, but now there are 2 automatic methods to wrap long lines.

### 1. Drag the text box to wrap text



## 2. Set default Word Wrap Option



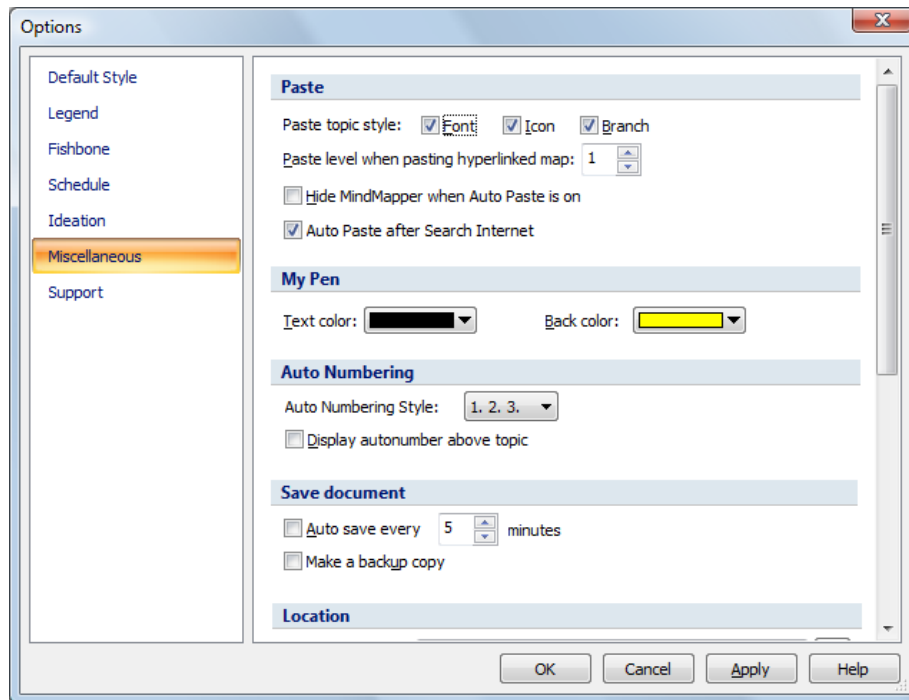
## 3. Word Wrapping and Sizing Operations

- Shift Double click any text sizing handles to cancel word wrapping*
- Double click left or right sizing handles to remove extra horizontal spaces*
- Double click up or down sizing handles to remove extra vertical spaces*
- Double click any corner sizing handles to remove all extra spaces*
- You can select multiple topics for sizing operations*

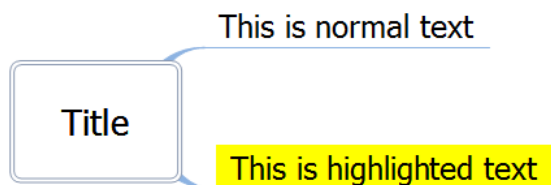
## E. My Pen

MindMapper 2009 includes My Pen feature that emulates highlighted text in your mapping canvas.

Use My Pen Settings to set your highlight color:



Then turn My Pen On and create a new branch or a text.  
Newly create text will display in highlighted mode



## F. Improved Speller with Thesaurus

MindMapper 2009 includes an updated and improved Spell Checker with an integrated Thesaurus.

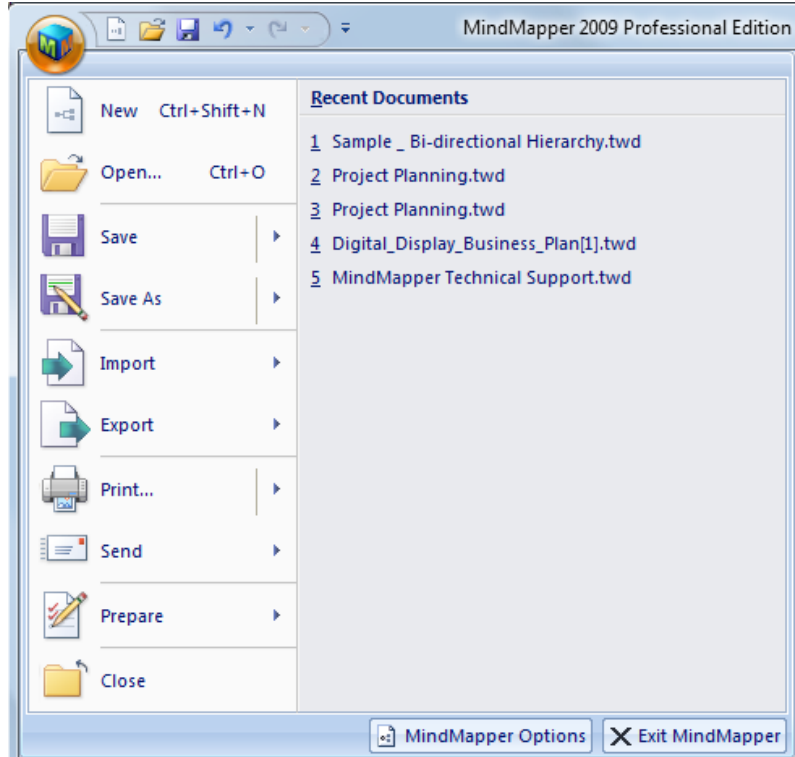
## IV. Intuitive User Interface

### A. Ribbon Style Menu

New Ribbon Style menu offers process oriented menu placement for more efficient usage. Most commonly used commands are placed on the Home tab.

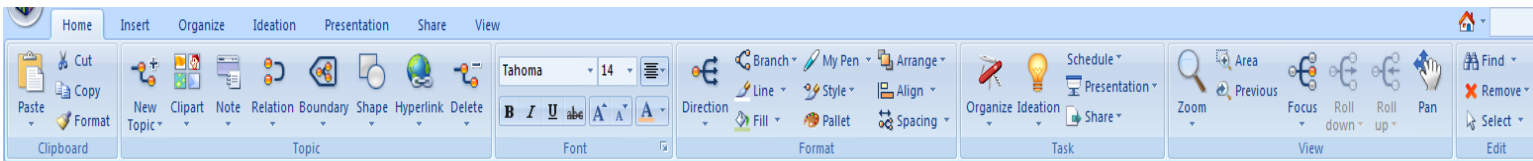
As you reduced your MindMapper Window horizontally, the ribbon menu will also condense, leaving you with the most used or popular commands. Expand the MindMapper Window horizontally to see the full menu set again.

## 1. Application Menu

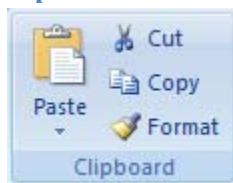


## 2. Home Tab

Most commonly used features are conveniently located on the Home tab of the Ribbon Toolbar



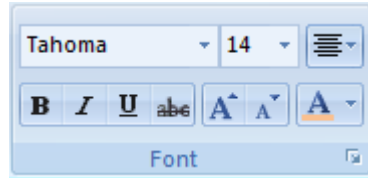
### a) Clipboard



### b) Topic



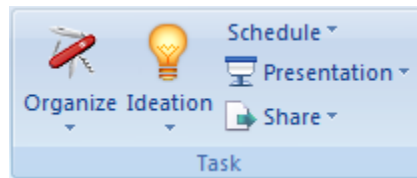
c) *Font*



d) *Format*



e) *Task*



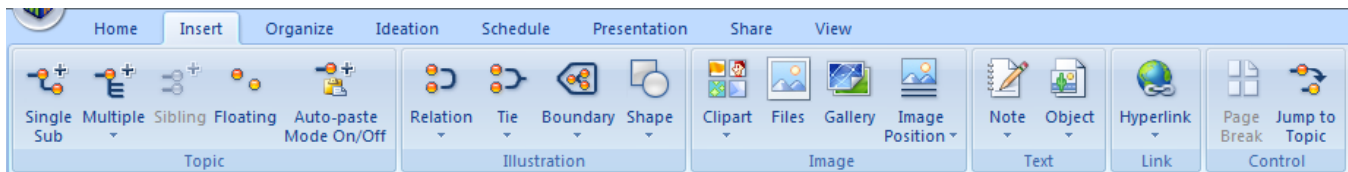
f) *View*



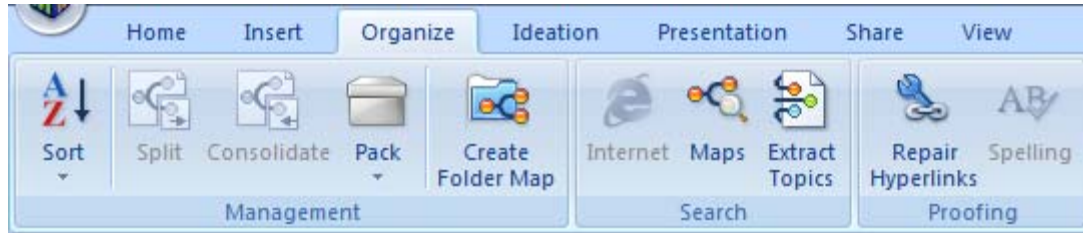
g) *Edit*



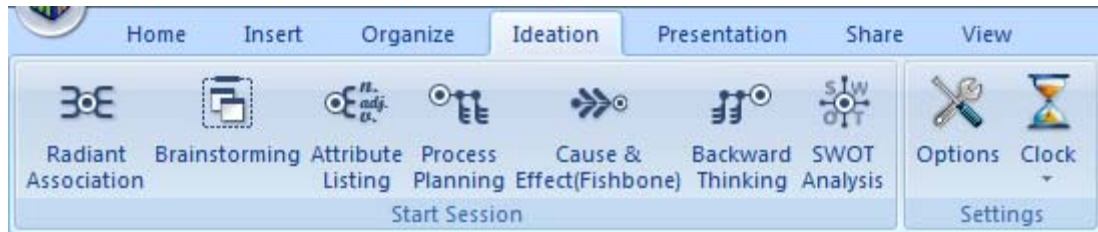
### 3. Insert Tab



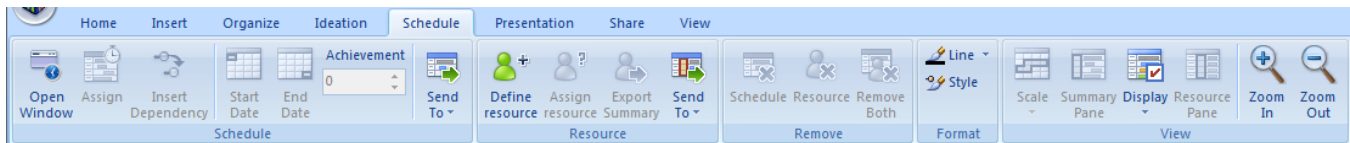
#### 4. Organize Tab



#### 5. Ideation Tab



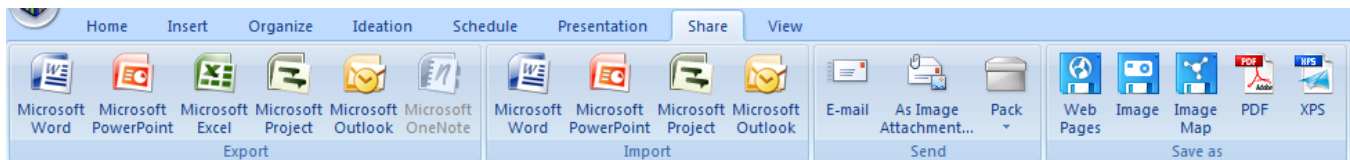
#### 6. Schedule Tab



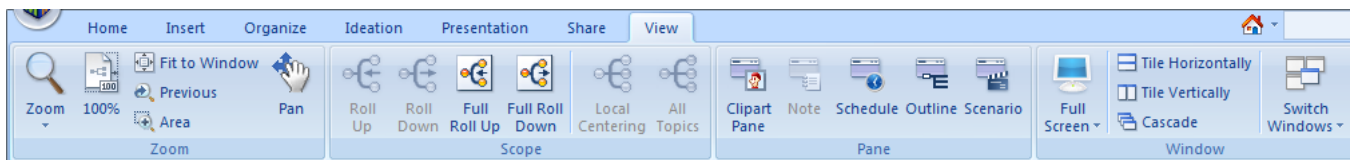
#### 7. Presentation Tab



#### 8. Share Tab



#### 9. View Tab

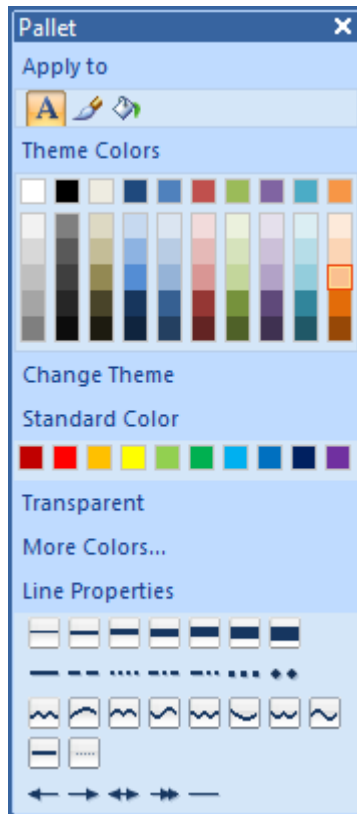


## B. Process Oriented Menu Placement

1. Commonly used features are strategically placed on the Home menu to reduce mouse clicks and improve efficiency.
2. Sub menus are grouped and placed to maximize business process flow in creating mind maps
3. Different tabs grouping similar features allow more seamless mouse operation

## C. Draw Pallet window

1. New Pallet window to combine all color attributes of fonts, branches, fills and lines.



## D. Enhanced Legend Icons

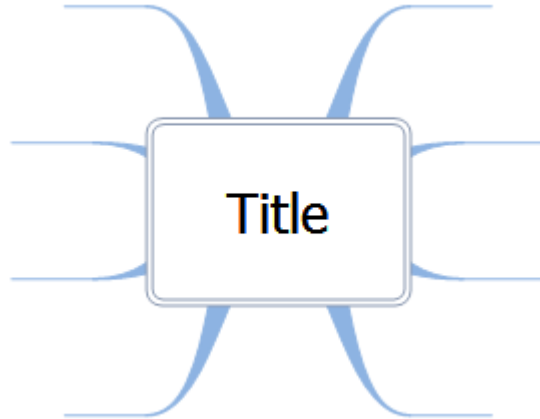
1. Added 30 more Legend icons for a total of 90
2. Custom Legends are embedded in the document so they show properly when sent to other users.
3. Able to re-size Legend toolbar to show 30, 60 or 90 Legends simultaneously



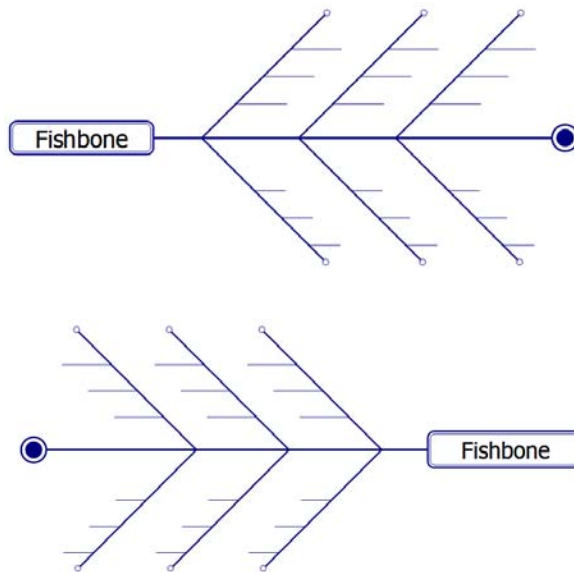
## V. New Designs and Configuration

### A. Optimized Graphic Elements

#### 1. Main Topic Branch optimization

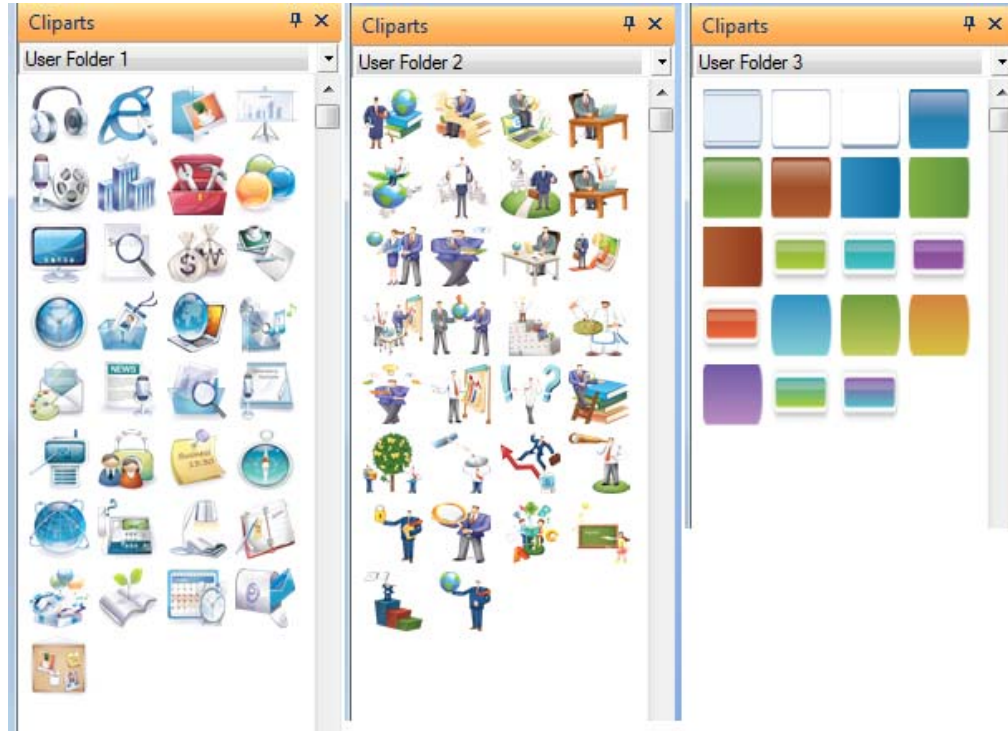


#### 2. Fishbone Design Improvement

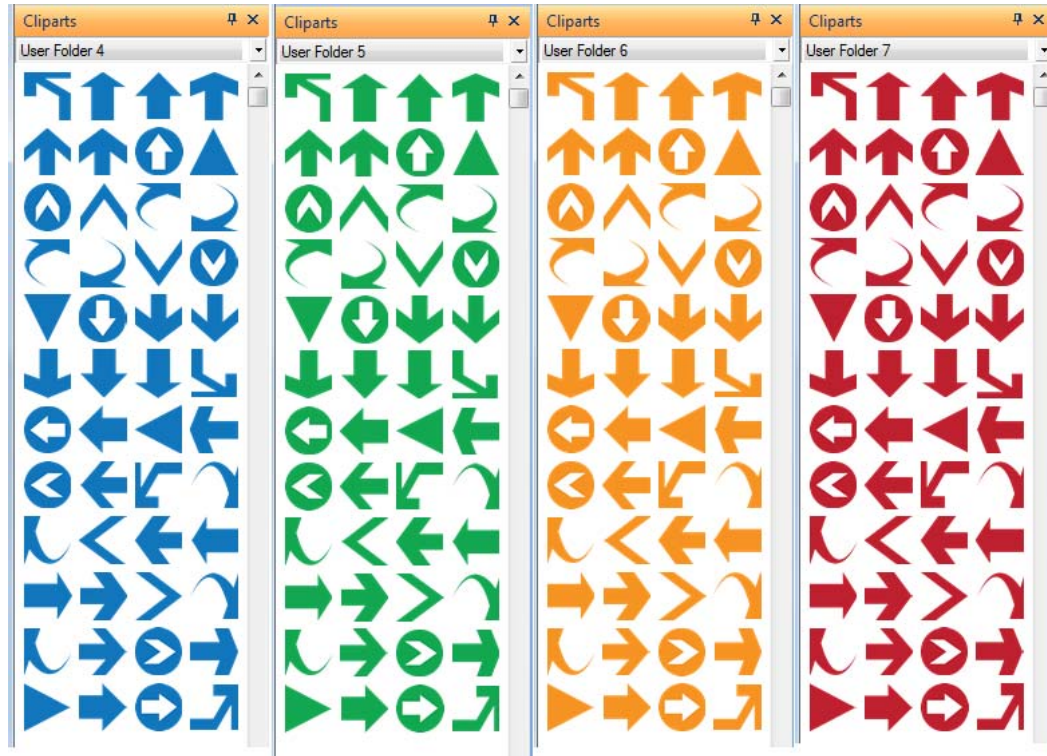


### 3. New and Additional Clipart Designs

#### a) Additional Clipart designs:



#### b) Additional Arrow Shapes



## B. Extended Conversion with MS Office Products

### 1. Export to MS Word

- a) Support exporting up to 10 levels deep*
- b) Export images in the Notes windows to Word document*
- c) Template selection is in the first option window*
- d) Exporting menu shows the number of levels in the current map*
- e) MindMapper will import Word documents not in a perfect outline format by using logical methods*
- f) You can choose to export the Notes without the associated topic text*

## C. Insert pictures to Notes window

You can now copy an image into the Notes window to add an extra dimension of description to your map.

## D. Improved Relation/Tie Lines for Logical flow

- 1. Use Alt + Mouse click, click to add Relationship and Tie lines
- 2. New Relationship/Tie lines maintain same color as the starting topic branch color
- 3. You can set arrow direction also by selecting the text and changing arrow properties
- 4. Bezier lines can also dragged by clicking the actual line instead of control points
- 5. Dragging Relationship/Tie text also drags and re-shapes the line
- 6. Added double-arrow lines

## E. Miscellaneous

### 1. Mouse and Keyboard

#### *a) Navigating Multiple Maps*

When working with multiple maps concurrently, now you can easily move between the first and last opened map with a new shortcut key

#### *b) Screen Performance*

Improved overall graphic performance with Panning the map (with right mouse button) and adding new branches.

*c) Mouse Control*

- (1) Alt + Up Arrow to Roll Up the map now rolls up all the way including first level branches
- (2) Alt + Left Mouse to detach a branch from the main tree shows improved cursor
- (3) Using Ctrl to stretch a topic size maintains the wrapping property of topic